

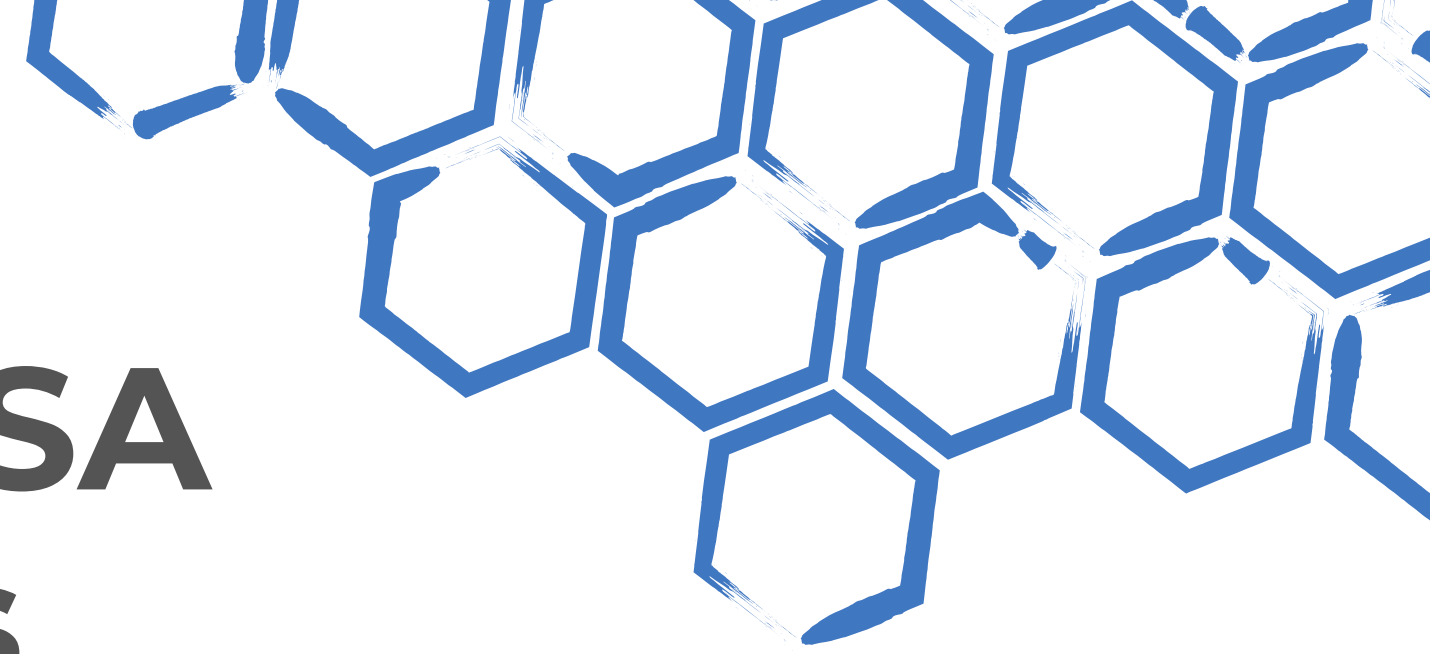


*Molecule to Market: Your Trusted Partner*

A professional services summary

# **Novel Route Design and Process Development**





# Raybow USA Responses

- reproduced client's 3-step process
- produced initial batch on gram scale
- designed novel 4-step route to save client time & money
- developed 4-step route into a robust and scalable process
- delivered High-Q material ahead of time & under budget
- supported client into IND submission stage
- continued communication and support to client

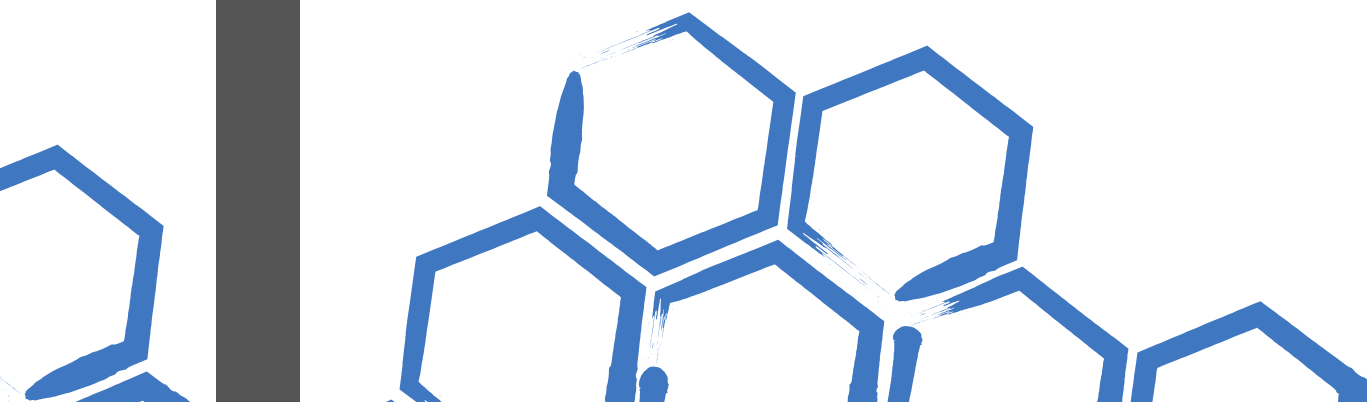
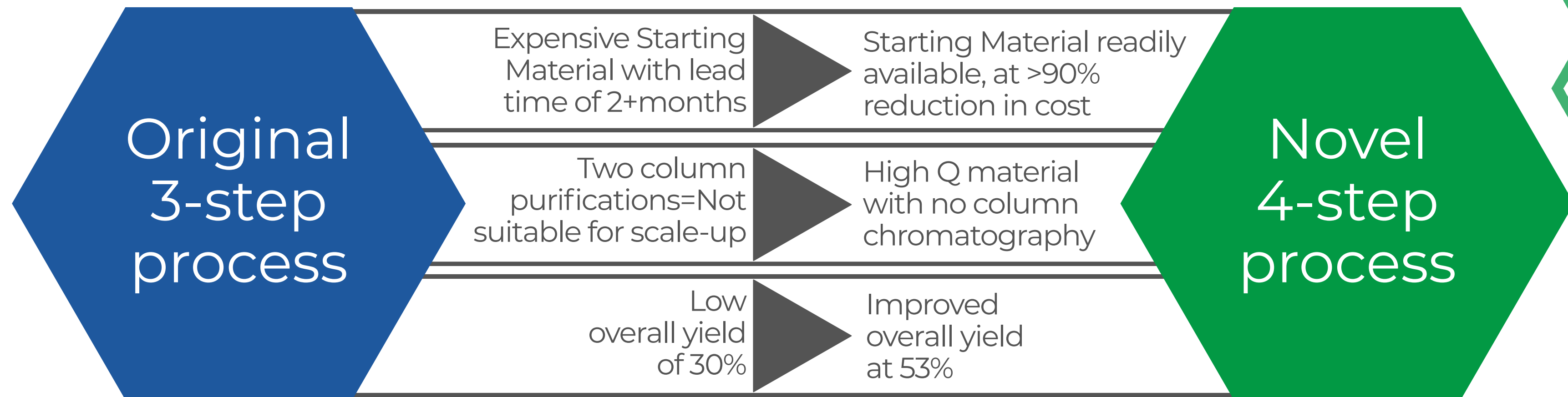
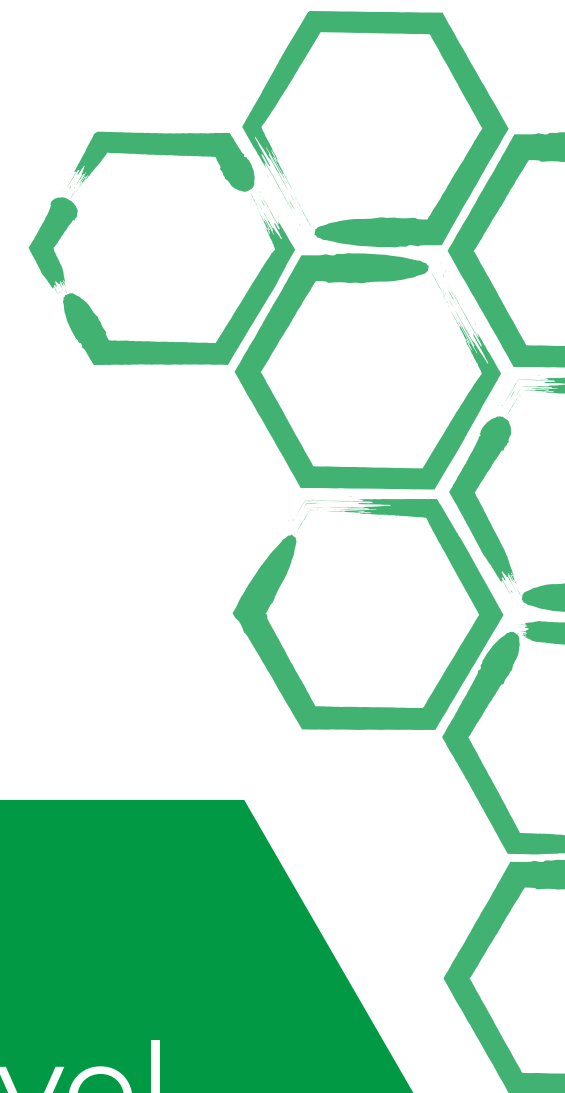


## Statement of Need

The client needed novel API for initial testing and IND-enabling studies, within their financial budget and time constraints.



# Process Development Outcomes





# Process Timeline



## September 2022

Raybow and client agree on scope of work and client issues PO.

## November 2022

Raybow demonstrates route feasibility and produces initial batch on gram scale.

## April 2025

Raybow produces second batch on multi-gram scale. Raybow identifies an alternative route.

## August-December 2025

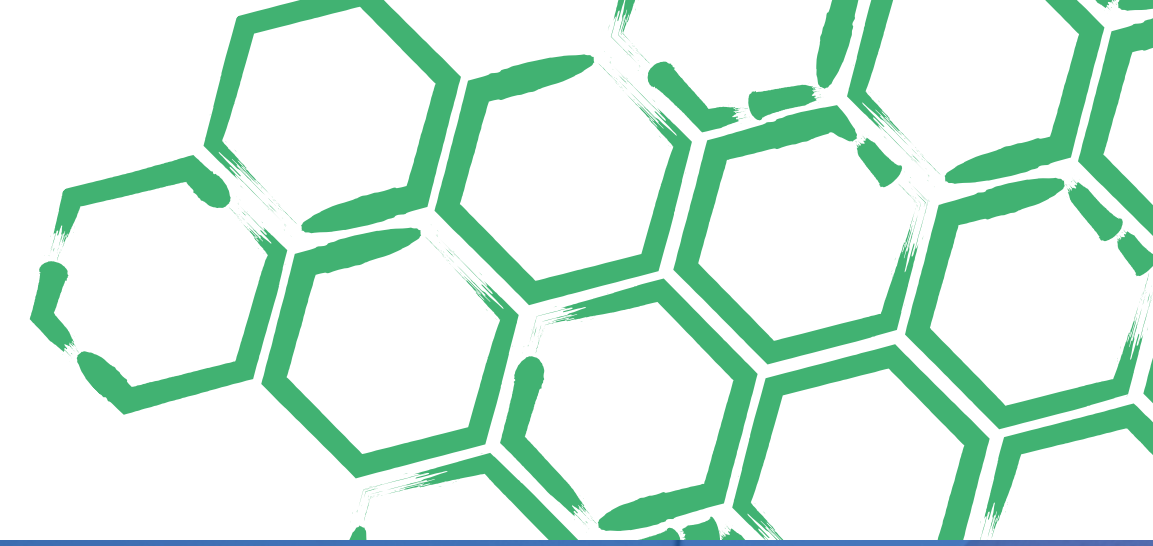
Working closely with Client, Raybow develops the new process and delivers 500 g + of high quality API

## 2026

Kilo-scale GMP production is scheduled to start Q3 2026



# Scope of Lab Work ●●●●●



process development



process optimization



production



analysis



quality





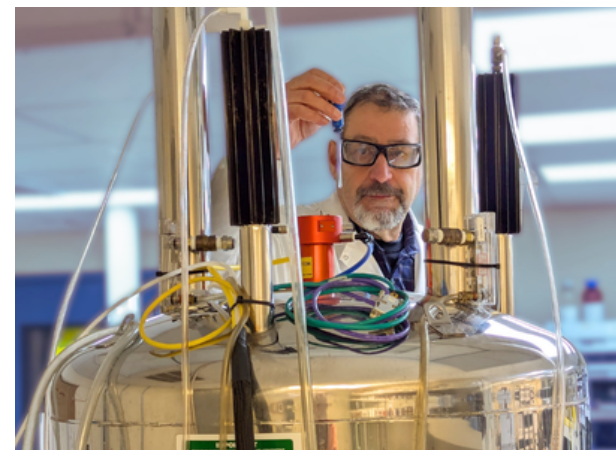
● ● ● ● ● **Outcome Summary**



**Rapid Product Delivery**



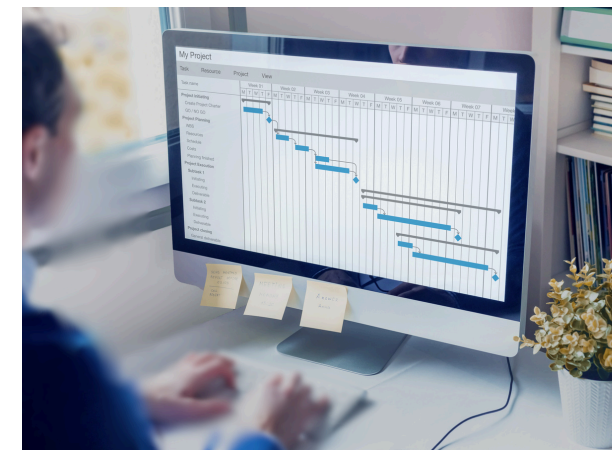
We rapidly delivered small batches of API for IND-enabling studies.



**Novel Route Development**



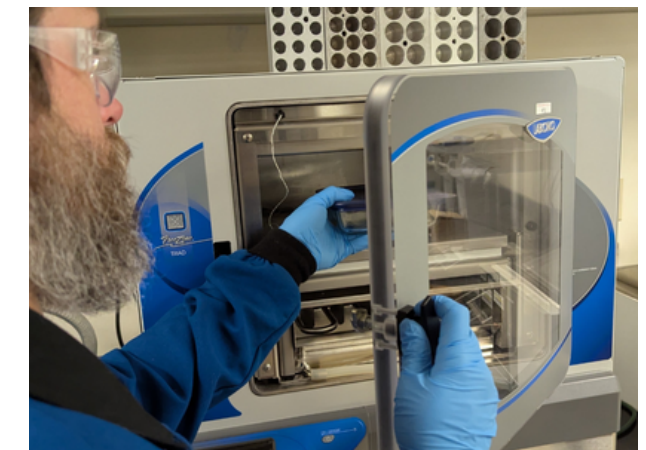
We discovered a faster, robust, scalable route for the customer's process.



**Saved Time and Money**



We delivered cost-savings through continued process improvement.



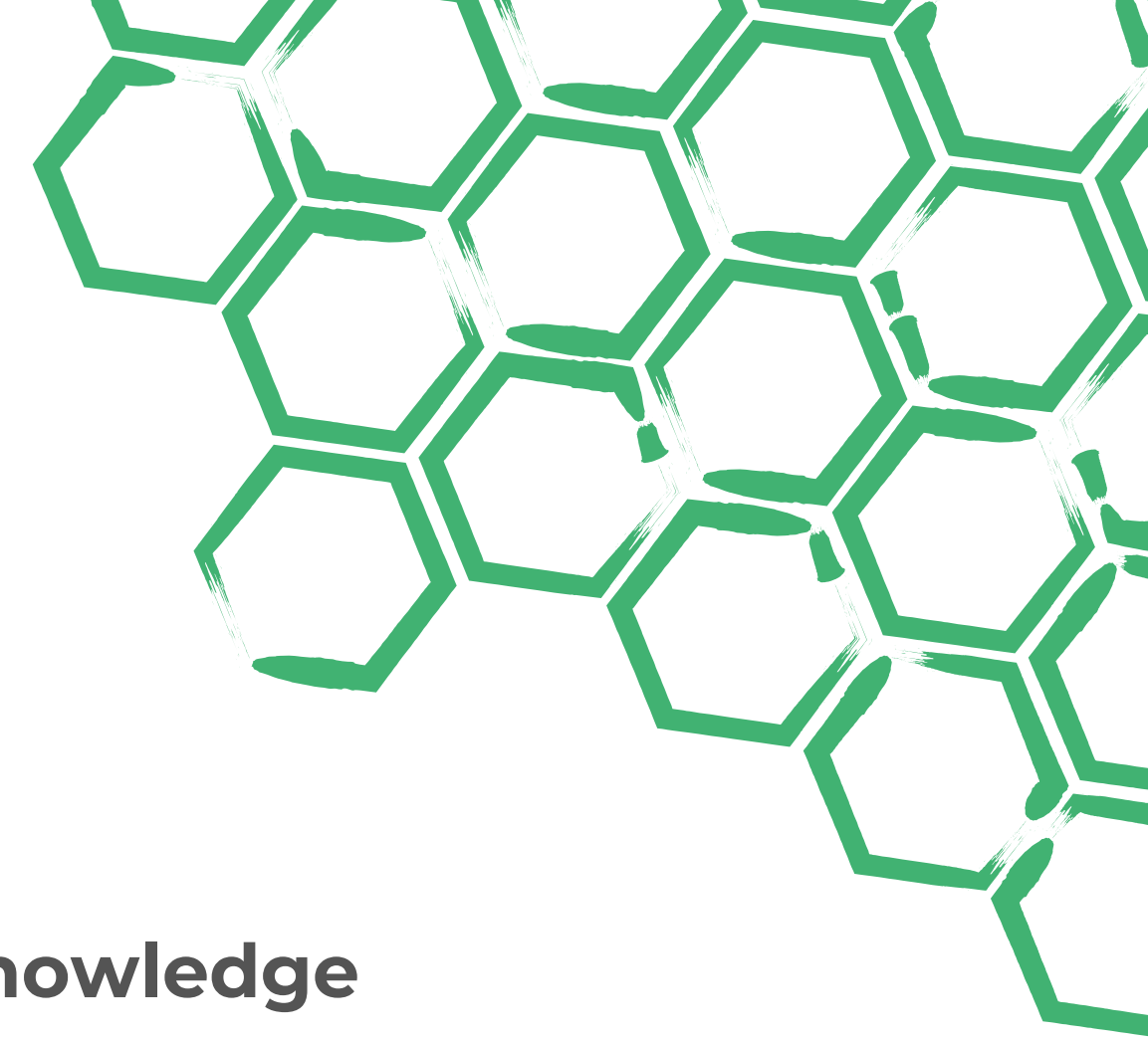
**Timely Product Submission**



We assisted the client with meeting their IND submission timeline.



# Guiding Professional Concepts



## **Dedication**

We allocated the time, equipment, and staff necessary to efficiently meet the client's needs.

## **Responsiveness**

We listened to the client's needs and formed an action plan, exceeding their goals and deadlines.

## **Knowledge**

We drew upon our team's expertise and experiences to fine-tune existing protocols and deliver cost-saving results.

## **Quality**

We applied established Quality-by-Design practices to ensure accuracy throughout the project.



# Effective Interactions

Interactions are key to project success. We employed multiple methods to receive direction from the client, keep the client informed of progress and results, deliver product batches, and achieve the client's project goals.

- **Virtual Meetings**
- **Phone Calls**
- **Emails**
- **Reliable Shipping with Tracking**
- **Secure Electronic Document Sharing**

## Ownership

All IP belongs to the client.  
Including new routes.





*Molecule to Market: Your Trusted Partner*

Start the conversation about  
your project.

**[sales@raybow.com](mailto:sales@raybow.com)**

**828-884-8656**

**[www.raybow.com](http://www.raybow.com)**

